

# Instructions for Attaching a Stand Accessory to a 1 Series Phototherapy Device

---

**Tools Needed:** A Phillips-head Screwdriver (has “+” shaped end)

**1 Series Stand Accessory Kit Includes:** 1 Cradle, 2 Spacer Disks, 2 Knobs, and 4 Phillips Screws

---

**Step 1:** Unplug the power cord from the device.

**Step 2:** Find a suitable work space and stand the device upright so that the lamps are facing toward you and the timer is towards the top, shown in the illustration at right.



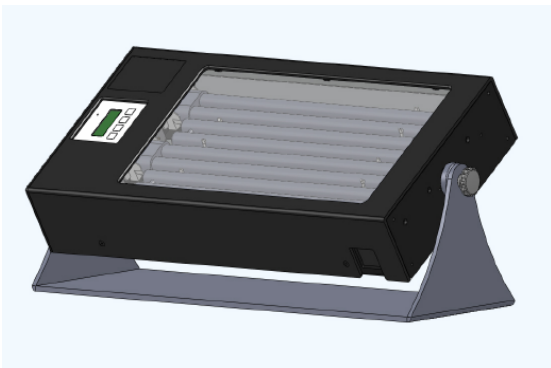
**Step 3:** Place one of the round spacer disks on the top of the device and align the two holes on the disk with the two holes in the device exterior.

**Step 4:** Insert two screws into the holes and tighten with a Phillips screwdriver.

**Step 5:** Place the other round spacer disk on the bottom side of the device and align with the holes there.

**Step 6:** Insert two screws into the holes and tighten with a Phillips screwdriver.

**Step 7:** Place the cradle next to the device and align the holes on the cradle with the holes on the spacer disks.



**Step 8:** Insert the black knobs into the holes and screw in to tighten. Your device is now ready for use, as shown in the illustration at left.